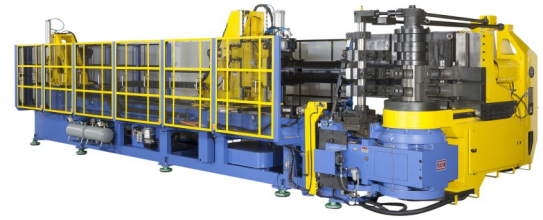
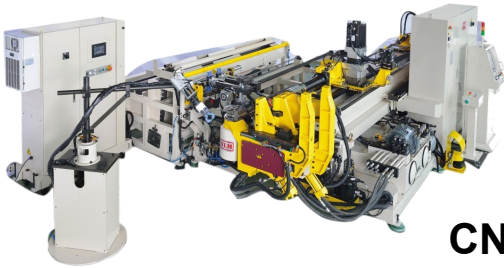


J&S Machine, Inc.

Established in 1998

Bending & Finishing Solutions

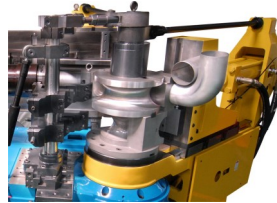
Knowledge & Experience Working for You



CNC Tube Bending Machines

- All-Electric & Hybrid Configurations
- ½" to 8" Tube Capacities
- Work cell packages

- Work with robots or tube loaders/unloaders
- Scanner and machine enclosure safety packages
- Shear cut, punching, and traveling saw options



Double-head Benders

NC Mandrel Pipe Benders

- ½" to 8" Tube Capacities
- Touch Screen
- Storage of Bend Sequences

- Up to 2" Tube Capacity
- Adjustable angles 0° - 180°
- Bend two different angles simultaneously

All-Electric Right/Left Benders

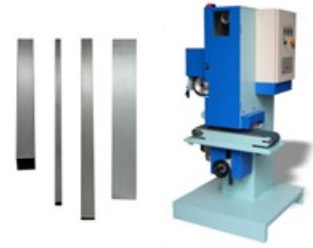
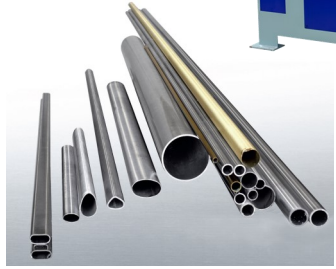
- ⅝" to 3" Tube Capacities
- Rotate, swing, and lift design





Surface Finishing Machines

- Suitable for Straight and Bent Work pieces
- Wet or Dry Operation
- Up to 30 ft/min feeding speed
- Deburring, End Finishing, and Tube Notching models available



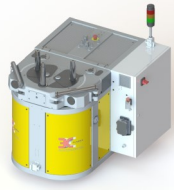
J&S Machine, Inc. was founded in 1998 as a response to requests for machine service, upgrades, and retrofits as well as new machine control package designing. From that beginning, J&S Machine expanded to include the sale of metal fabrication equipment from quality manufacturers, primarily in tube bending and finishing. The sales and service of bending and finishing machines are the focal point of our current operation. Utilizing skills and knowledge obtained from previous employments we can conduct complete installations and training on our products, tooling setups, bending troubleshooting, tooling design, and a variety of application evaluations.

J&S Machine, Inc. is located in Ellsworth, Wisconsin. This location is approximately 45 miles east of the Minneapolis/St. Paul airport providing easy access for customers wishing to visit and examine the machines maintained in our inventory as well as convenient air travel for our travels. Most visits to our facility can be accomplished in one day from locations throughout the United States.

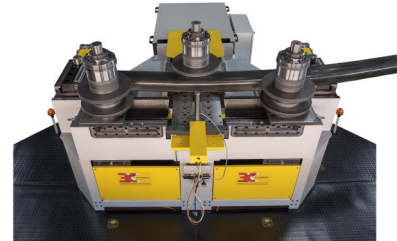
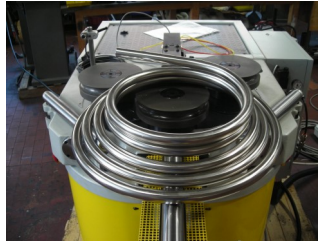
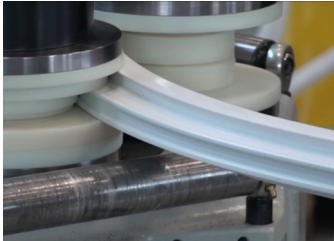




Profile / Angle Roll Bending Machines



- Pyramidal & Double-pinch configurations
- Multiple control options with touch screen
- Up to 8" Sch. 40 Capacity
- Add-on devices available for bending angle iron, serpentine shapes, spirals/coils

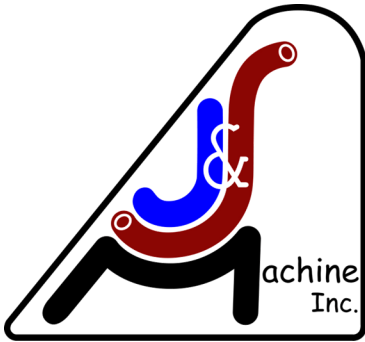


Horizontal Bending Presses



- Five Tonnage Options
- Manual or NC Control
- Multiple Tool Options
- Multiple Machine Configurations





J&S Machine, Inc.

W6009 490th Ave.

Ellsworth, WI 54011

Ph: 715-273-3376

Fax: 715-273-5241

Email: sales@jsmachine.com

Web Site: www.jsmachine.com