

2024

HRX

BESPOKEMOTORSPORT

OUR PASSION IS RACING.





Many people ask why HRX has grown so steadily in such a short amount of time. The answer is simple, we have motorsport in our DNA.



WHY CHOOSE HRX

TOP PROFESSIONAL QUALITY

COMPLETE RANGE

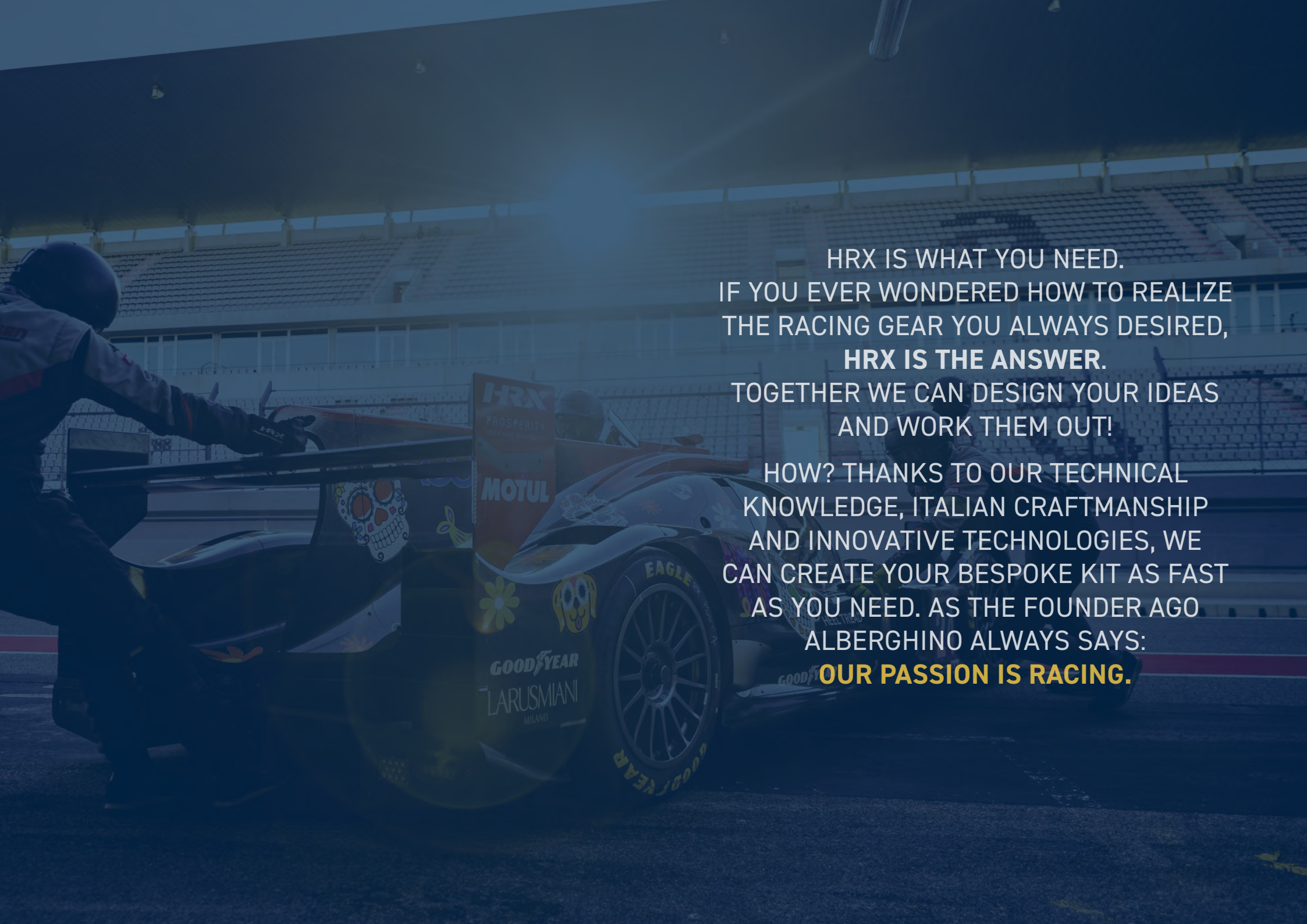
BESPOKE PRODUCTION

MOTORSPORT SERVICE

RUSH SERVICE

MADE IN ITALY

DEDICATED CUSTOMER SERVICE



HRX IS WHAT YOU NEED.
IF YOU EVER WONDERED HOW TO REALIZE
THE RACING GEAR YOU ALWAYS DESIRED,
HRX IS THE ANSWER.
TOGETHER WE CAN DESIGN YOUR IDEAS
AND WORK THEM OUT!

HOW? THANKS TO OUR TECHNICAL
KNOWLEDGE, ITALIAN CRAFTSMANSHIP
AND INNOVATIVE TECHNOLOGIES, WE
CAN CREATE YOUR BESPOKE KIT AS FAST
AS YOU NEED. AS THE FOUNDER AGO
ALBERGHINO ALWAYS SAYS:
OUR PASSION IS RACING.

WALL OF FAME

FORMULA E

2023
Team Andretti



BTCC

2023
Ashley Sutton



24H LE MANS - LMP2

2023
Intereuropol



EXTREME E

2023
Team RXR



SUPER FORMULA

2023
Ritomo Miyata



IMSA

2023
Cadillac



WALL OF FAME

INDY 500

2021

Hélio Castroneves



F2

2022

Felipe Drugovich



LMP2

2022

Jota



24H LE MANS - ELMS

2020

United Autosport



EXTREME E

2022

Team X44



BTCC

2022

Tom Ingram for Excelr8



WALL OF FAME

GT4

2021

United Autosport



ELMS LMP3

2022

Cool Racing



WRC MASTER

2022

Dream One Racing



IMSA

2022

MSR



SPANISH RALLY

2022

Teo Martin



ARGENTINA RALLY

2022

Ligato



WALL OF FAME

IMSA
2022
Dragon Speed



IMSA GTD
2022
Lexus



BRITISH GT
2022
Balfe Motorsport



IMSA
2021
Action Express



GT OPEN
2022
Getspeed



WEC GTE AM
2022
TF Sport





RACING FAMILY





I have found with HRX a product which fits my needs perfectly as a driver and the needs of Team Virage's staff overall. On the racing driver side, HRX provides a suit which you don't feel while racing, and which keeps you cooler than any other product I have tried. Also, the quality and finition are impeccable. On the team's side, HRX provides us with a wide range of personalised material adapted to our mechanics' needs and protection. It is a company which collaborates with its clients in order to provide the best service. We have trusted HRX for our equipment since 6 seasons, and it was one of these great decisions.

Julian Gerbi

INDEX

BESPOKE EXPERIENCE 19

FORMULA	20
ZERO ICON PLUS	24
ZERO ICON	26
EMOZIONE	28
KIT FORTE	32
VELOCE	34
VINTAGE	36
GLOVES	
EVOLUZIONE	44
RACER	46
SHOES	
ICON	50
VITTORIA	51
UNDERWEAR	53

ICS EXPERIENCE 61

DESIGN 64

READY-TO-WEAR EXPERIENCE 67

ZERO ICON GET	68
EMOZIONE	70
VELOCE	74
RACER PL	
ONE	76
NF2	77
GLOVES	
EVOLUZIONE	79
RACER	80
TUTOR	81
SHOES	
ICON	84
VITTORIA	86
UNDERWEAR	
ICON	88
ZERO	92
RACER 18	94
INTIMO	95

MECHANICS EXPERIENCE 99

EMOZIONE	100
VELOCE	102
PIT-LANE	105
COTTON	106
GLOVES	
TUTOR	109
PRO TECH	109
SHOES PIT-LANE	110
UNDERWEAR	112
RACER18	

SIZE CHART 116



THE SELECTION TO DEVELOP YOUR RACEWEAR

BESPOKE

19

ICS

61

READY-TO-WEAR

67

TEAM JMW



HRX

BESPOKEMOTORSPORT



ALL THE HRX PRODUCTS ARE UNIQUE PIECES.

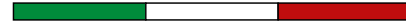
- CREATED WITH OUR DESIGNERS TO DEVELOP YOUR IDEAL SUIT THAT REPRESENTS THE BEST IMAGE YOU WANT TO SHOW
- DEVELOPED BY OUR PATTERN-MAKERS TO GIVE YOU THE BEST FITTING AND COMFORT DEPENDING ON EACH SITUATION
- ENTIRELY HANDMADE

EVERY SINGLE HRX PRODUCT IS A FOCUS OF INDUSTRIAL ATTITUDE WITH AN EXTRA TRADEMARK OF ITALIAN CRAFTSMANSHIP.

ALL PROJECTS CAN BE CONSIDERED AS A REAL MASTERPIECE.



TEAM ANDRETTI
@spacesuitmedia



B E S P O K E



B E S P O K E





B E S P O K E

E X P E R I E N C E

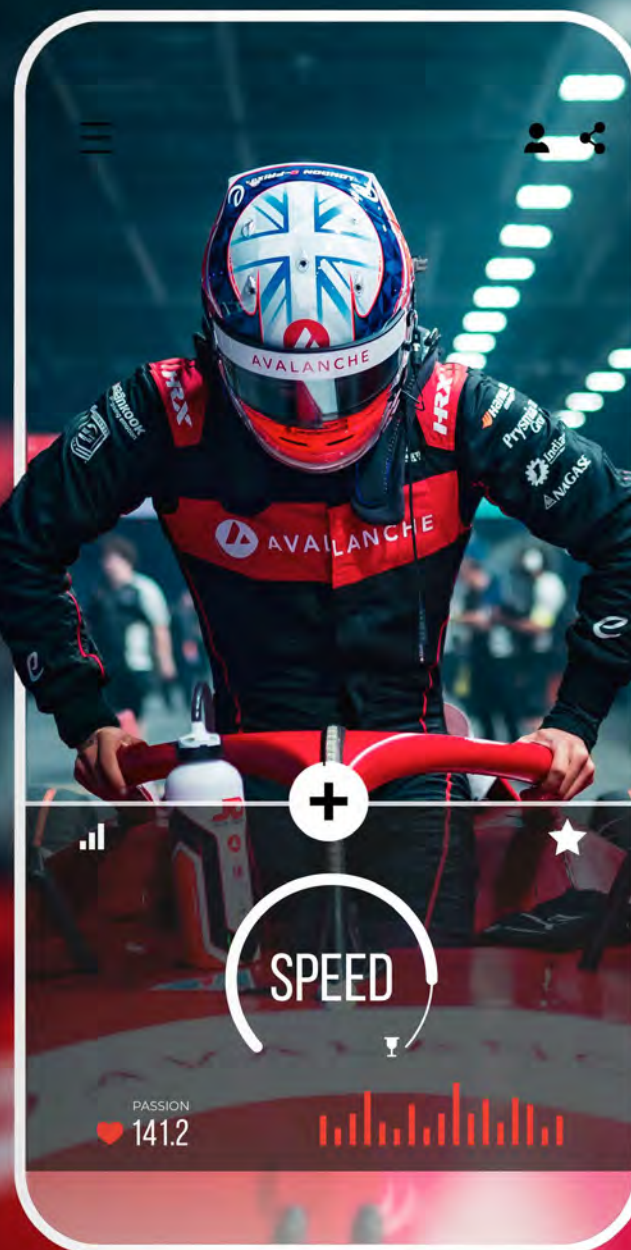
WHATEVER, WHEREVER, WHENEVER!
MAKE IT HAPPEN WITH HRX!
CONTACT YOUR SALES MANAGER TO
CREATE YOUR TAILOR-MADE RACING
GEAR WITH OUR MOST ICONIC DESIGNS.

- **WHATEVER**
OUR PRODUCTS ARE CUSTOMIZABLE
- **WHEREVER**
TO EVERYWHERE IN THE WORLD
- **WHENEVER**
WHOLE YEAR WE HAVE YOU COVERED

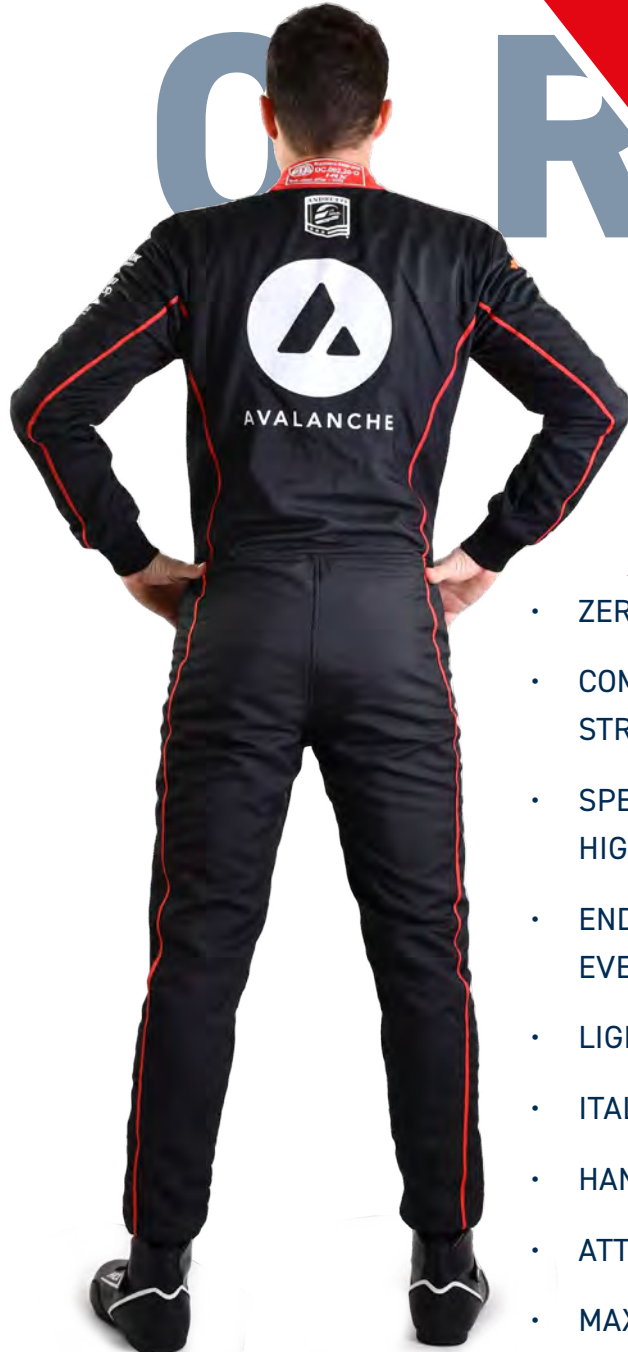
FORMULA

OUR BRAND-NEW FORMULA SUIT
HAS BEEN DEVELOPED TO REACH
EVERY DRIVER'S DREAM.

MOTORSPORT
MASTERPIECE



F O R M U L A



WHY A MASTERPIECE?

- ZERO ICON PREMIUM LINE
- COMPLETELY MADE TO MEASURE WITH NO NEED FOR STRETCH PANELS
- SPECIFICALLY DESIGNED FITTING TO ENSURE THE HIGHEST FREEDOM OF MOVEMENTS
- ENDURANCE AND BREATHABILITY THAT CAN MANAGE EVERY RACE
- LIGHT WEIGHT AS THE NEWEST FORMULA SUITS
- ITALIAN CRAFTSMANSHIP
- HANDMADE
- ATTENTION TO DETAIL
- MAXIMUM PRECISION








SUPER
FORMULA

**Drivers'
Champion**

37

RITOMO MIYATA - SUPER FORMULA

ZERO ICON PLUS

THE **ZERO ICON PLUS** SUIT IS AN UPGRADED VERSION OF OUR BESTSELLER SUIT, WITH EXTRA ELASTIC FABRIC ELAXTEX® TO GUARANTEE THE BEST LIGHTWEIGHT AS WELL AS BREATHABILITY AND MORE FREEDOM OF MOVEMENTS.

- INNOVATIVE ELASTIC FABRIC
- EXTRA STRETCH PANEL ON ELBOW, BACK, CROTCH, KNEE
- TECHNOLOGY AND HIGH QUALITY MATERIALS
- LIGHTWEIGHT AND BREATHABILITY



MANUFACTURER: HRX
MODEL: ZERO ICON
HOM. NO.: DC.092.20- O
FIA STANDARD: 8856-2018

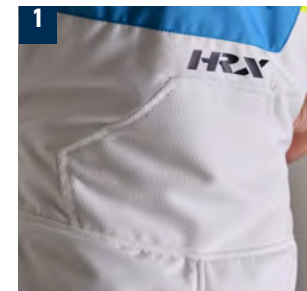


INNOVATIVE ELASTIC FABRIC **ELAXTEX®**

BEST ULTRALIGHT

BREATHABLE

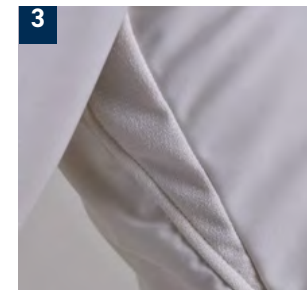
EXTREMELY STRETCHABLE



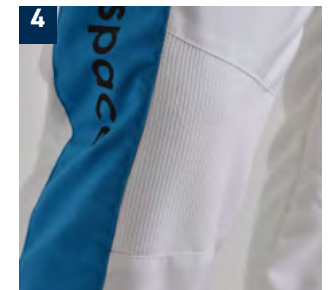
1
STRETCH PANEL: BACK



2
STRETCH PANEL: ELBOW



3
STRETCH PANEL: CROTCH



4
STRETCH PANEL: KNEE

ZERO ICON

THE SUIT **ZERO ICON** HAS BEEN DESIGNED AIMING AT A ZERO COMPROMISES SUIT.

- TECHNOLOGICALLY UNIQUE
- HIGH QUALITY MATERIALS
- LIGHTWEIGHT AND BREATHABILITY
- FREEDOM OF MOVEMENTS



MANUFACTURER: HRX
MODEL: ZERO ICON
HOM, NO: DC.092.20-O
FIA STANDARD: 8856-2018



BLOMQUIST, BRAUN, CASTRONEVES AND PAGENAUD, TEAM MSR - IMSA 2023

EMOZIONE

SUBLIMATED
FIREPROOF
SUIT



LET YOUR
IMAGINATION
RUN WILD



MANUFACTURER: HRX
MODEL: EMOZIONE
HOM_NO: DC.294.22-O
FIA STANDARD: 8856-2018

EMOZIONE



100% CUSTOMIZATION

Create your own graphics
without limits,
along with your style.

FIA HOMOLOGATED SUIT



FIA APPROVED

MANUFACTURER: HRX
MODEL: EMOZIONE
HOM, NO: DC.294.22-O
FIA STANDARD: 8856-2018



EMOZIONE



OUR FIREPROOF SUBLIMATED SUIT BY HRX:
YOUR CREATIVITY HAS NO LIMITS.

- THE LIGHTEST SUBLIMATED SUIT
- ABSOLUTE FREEDOM IN TERMS OF DESIGN
- TWO DIFFERENT EXTRA KITS ARE AVAILABLE:
KIT PLUS (KNIT) - FOR A BETTER FREEDOM OF MOVEMENTS
KIT FORTE - FOR A BETTER BREATHABILITY

 **APPROVED**

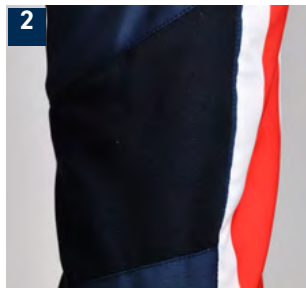
MANUFACTURER: HRX
MODEL: EMOZIONE
HOM, NO: DC.294.22-O
FIA STANDARD: 8856-2018

EMOZIONE KIT FORTE

- AVAILABLE ONLY FOR EMOZIONE SUIT
- ENSURE BETTER AIR PASSAGE AND BREATHABILITY
- ON CALVES AND LATERAL SIDES
- INNOVATIVE MATERIAL



ELBOW



BACK KNEE



LATERAL SIDES



MANUFACTURER: HRX
MODEL: EMOZIONE
HOM. NO.: DC.294.22-O
FIA STANDARD: 8856-2018



CHILTON, PEARSON, HALSTEAD AND INGRAM, TEAM EXCELR8 - BTCC

VELOCE

THE **VELOCE** SUIT IS A MEDIUM-HIGH LEVEL SUIT WITH THE BEST COMPROMISE.

- GREAT VALUE FOR MONEY
- NEW INNOVATIVE BREATHABLE INTERNAL FABRIC





32

Rowbottom

CATACLEAN

NAPA

FENIX

BELL

FENIX
fenixfreight.com

AVOLINE
RUSTED

VINTAGE

CLASSIC DESIGN

OPTIONALS:

- OLD-FASHIONED EXTERNAL POCKETS
- EMBROIDERIES
- AVAILABLE ON ALL OUR SUITS MODELS
- TONE ON TONE HRX LOGO ON SHOULDERS*

*ADDITIONAL FEE IS REQUIRED











ÄHLIN-KOTTULINSKY



ALISA AND NATTANID







MP - F1 ACADEMY



GLOVES EVOLUZIONE

EVOLUZIONE ARE THE NEW GLOVES PROJECTED BY HRX THAT HAVE A FITTING DESIGNED TO ENHANCE THE PERFORMANCE OF OUR DRIVERS ON THE RACE.

- EXTERNAL SEAMS
- INNER SEAM ON THE THUMBS
- GREAT GRIP
- GREATER SENSIBILITY
- NEW DESIGN THAT CHARACTERIZES THE MODEL
- CUSTOMIZABLE WITH FIREPROOF AND TOP QUALITY PRINTING



MANUFACTURER: HRX
MODEL: RACER
HOM. NO: DC.016.19- G
FIA STANDARD: 8856-2018





GLOVES RACER

FOR A WINNING RACE, DON'T FORGET TO BRING WITH YOU YOUR CUSTOMIZED GLOVES!

- FULLY CUSTOMIZABLE
- UNIQUE AND RECOGNIZABLE IMAGE
- ENSURE YOUR LOOK
- FIREPROOF AND TOP QUALITY PRINTING
- APPEARANCE OF SPONSORS LOGOS



MANUFACTURER: HRX
MODEL: RACER
HOM. NO: DC.016.19- G
FIA STANDARD: 8856-2018





HRX





ALPINE
ACADEMY

BANK

BWT

VAR
JETCF

PIRELLI
RACING

ALPINE
SOPHIA

VAR
BANK
MATRIX
HRX

CHANGING
THE WORLD

SOPHIA

SHOES ICON

OUR **ICON** SHOES ARE THE RESULT OF DILIGENCE, EXPERIENCE AND EXTENSIVE DEVELOPMENT WITH TEAMS AND DRIVERS.

- HANDMADE IN ITALY
- GREAT QUALITY
- EXCELLENT DRIVER COMFORT AND FEELING
- POSSIBILITY OF SEMI-CUSTOMIZATION
- AVAILABLE IN SIZES FROM 37 TO 47



MANUFACTURER: HRX
MODEL: ICON
HOM. NO.: DC.347.23-Z
FIA STANDARD: 8856-2018



SHOES VITTORIA



VITTORIA IS OUR NEWLY-LAUNCHED PRODUCT TO REACH EVERY DRIVER'S EXPECTATIONS, WITH A DIFFERENT DESIGN FROM ICON.

- DYNAMIC DESIGN
- ULTRALIGHT AND ULTRATHIN OUTSOLE
- SHOE COLLAR AND TONGUE IN STRETCH PANEL TO PROVIDE THE BEST ELASTICITY AND COMFORT
- LIGHTWEIGHT
- SOON AVAILABLE



UNDERWEAR

FOR A WINNING RACE, DON'T FORGET TO BRING WITH YOU YOUR CUSTOMIZED UNDERWEAR!

- FULLY CUSTOMIZABLE
- UNIQUE AND RECOGNIZABLE IMAGE
- ENSURE YOUR LOOK
- FIREPROOF AND TOP QUALITY PRINTING
- APPEARANCE OF SPONSORS LOGOS



MANUFACTURER: HRX
MODEL: ICON TOP
HOM. NO.: DC.201.21-T
FIA STANDARD: 8856-2018

HRX



**ALBUQUERQUE
UNITED AUTOSPORT**

UNDERWEAR



ICON ZERO RACER



MANUFACTURER: HRX
 MODEL: ICON TOP
 HOM. NO.: DC.201.21-T
 FIA STANDARD: 8856-2018









I C S

E X P E R I E N C E

ALL-ENCOMPASSING CUSTOMIZATION EXPERIENCE IN FOUR EASY STEPS WITH OUR ONLINE CONFIGURATOR, REALIZE YOUR DREAM RACING GEAR.

1. CHOOSE THE LEVEL OF THE RACING GEAR

CHOOSE YOUR RACING GEAR LEVEL ACCORDING TO YOUR NEEDS TO GET THE BEST PERFORMANCE

2. PICK YOUR COLOURS

PICK WIDE COLOUR COMBINATIONS AND DESIGNS

3. SELECT YOUR LOGOS

SELECT YOUR LOGOS AND PLACE THEM WHERE NEEDED

4. CREATE YOUR KIT



**MAKE IT REAL:
LET'S DO IT
TOGETHER!**



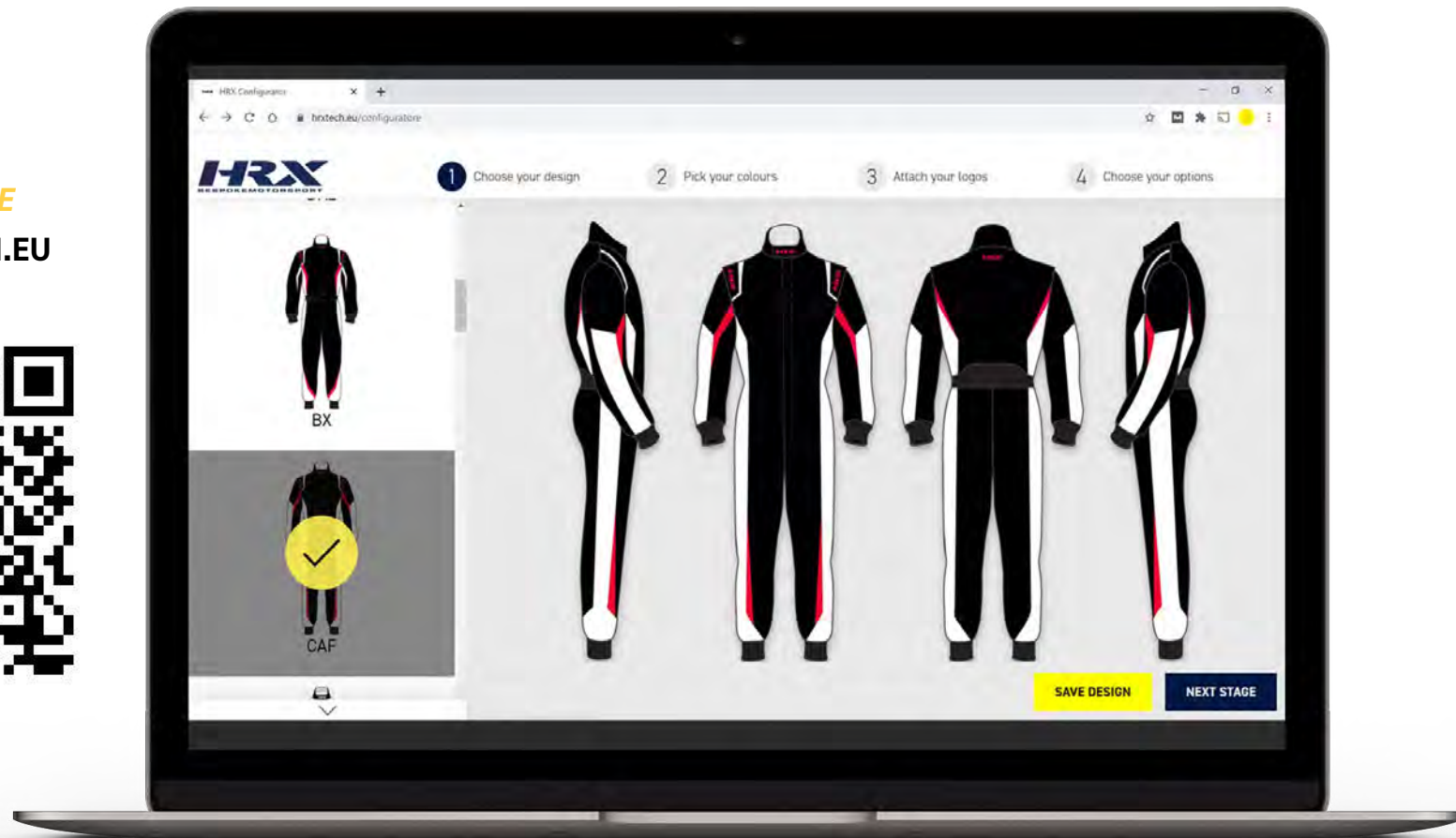
HUBER
RACING

LEON KOHLER AND JORGE LORENZO - TEAM HUBER RACING

CREATE YOUR SUIT USE OUR DESIGNS FOR YOUR PROJECT

ALL MODELS ARE AVAILABLE IN ZERO ICON,
VELOCE AND RACER PRO

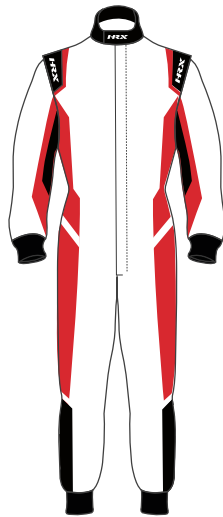
SCAN HERE
WWW.HRXTECH.EU



K-V KEY



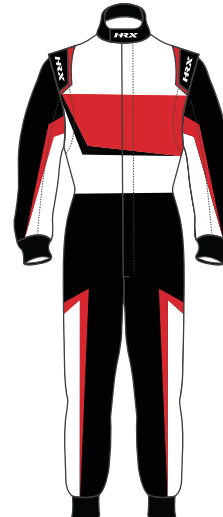
GET



BK2



CAS



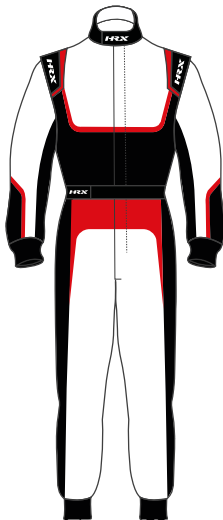
JMS



RX



ASH



UNI



BX



NF2



FAST FLUO



CORE-M



ROB



M19



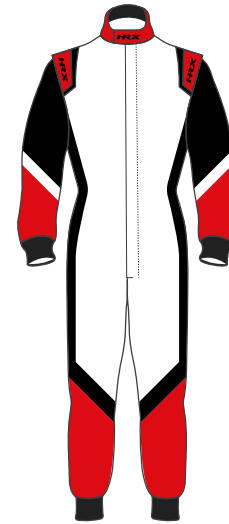
ABS



KW1



NEM



JAC



SIL



SPV



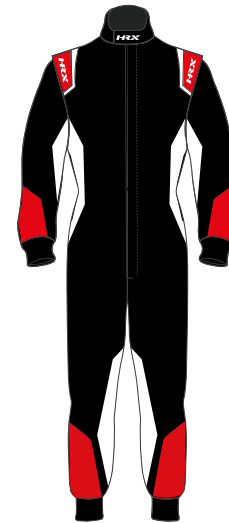
CAF



SUT



EXL



WVC





READY-TO-WEAR

E X P E R I E N C E

READY, STEADY, GO WITH OUR R
EADY-TO-WEAR PRODUCTS!

- **READY**
SELECT BETWEEN OUR WIDER OFFER
OFF-THE-SHELF PRODUCTS
- **STEADY**
YOU NAME IT WE HAVE IT
- **GO**
READY TO RACE

ZERO ICON GET

TO SATISFY EVERY REQUEST, CHOOSE THE STANDARD
READY-TO-WEAR THAT SUITS YOU.

- ICONIC SUIT FROM TECHNOLOGICAL POINT OF VIEW
- HIGH QUALITY MATERIALS
- LIGHTWEIGHT AND BREATHABILITY
- FREEDOM OF MOVEMENTS
- COLORS: **BLACK/DARK GREY** OR **NAVY BLUE/WHITE**
- AVAILABLE IN SIZES FROM **46** TO **64**



MANUFACTURER: HRX
MODEL: ZERO ICON
HOM_NO: DC.092.20-O
FIA STANDARD: 8856-2018



GET

BLACK - DARK GREY



NAVY BLUE - WHITE



THIS IS A STANDARD PRODUCT.
TO HAVE IT IN ANY COLOR, CUSTOMISE
IT ON OUR ONLINE CONFIGURATOR.



MANUFACTURER: HRX
MODEL: ZERO ICON
HOM, NO: DC.092.20-O
FIA STANDARD: 8856-2018

EMOZIONE

TO SATISFY EVERY REQUEST, CHOOSE THE STANDARD
READY-TO-WEAR THAT SUITS YOU.

- THE LIGHTEST SUBLIMATED SUIT
- COLORS: **NAVY BLUE/GREEN FLUO/SILVER GREY**
OR **WHITE/BLACK/RED**
- AVAILABLE IN SIZES FROM **46 TO 64**



MADE IN ITALY

HRX

DESIGN

HRX

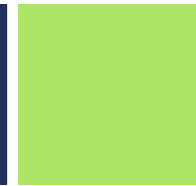
OUR PASSION IS RACING.



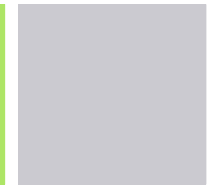
NAVY BLUE



GREEN FLUO



SILVER GREY



APPROVED

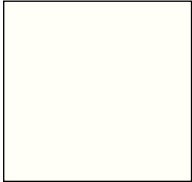
MANUFACTURER: HRX
MODEL: EMOZIONE
HOM. NO.: DC.294.22-O
FIA STANDARD: 8856-2018

HRX

MADE IN ITALY

EMOZIONE STD 1

WHITE



BLACK



RED



FIA APPROVED

MANUFACTURER: HRX
MODEL: EMOZIONE
HOM. NO: DC.294.22-O
FIA STANDARD: 8856-2018



VELOCE BK2

TO SATISFY EVERY REQUEST, CHOOSE THE RANGE **READY-TO-WEAR** THAT SUITS YOU.

- GREAT VALUE FOR MONEY
- INNOVATIVE BREATHABLE INNER FABRIC
- COLORS: **BLACK/WHITE/ROYAL BLUE**
- AVAILABLE IN SIZES FROM **46 TO 64**

BLACK

WHITE

ROYAL BLUE



THIS IS A STANDARD PRODUCT.
TO HAVE IT IN ANY COLOR, CUSTOMISE
IT ON OUR ONLINE CONFIGURATOR.



MANUFACTURER: HRX
MODEL: RACER 18
HOM_NO: DC.094.20-0
FIA STANDARD: 8856-2018





RACER PL ONE

TO SATISFY EVERY REQUEST, CHOOSE THE STANDARD READY-TO-WEAR THAT SUITS YOU.

- PRICE CONSCIOUS MODEL
- VERY DURABLE
- SIMPLE AND EFFICIENT DESIGN
- AVAILABLE IN SIZES FROM 46 TO 64



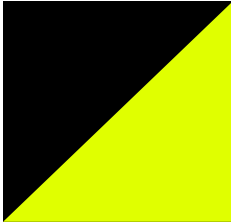
THIS IS A STANDARD PRODUCT.
TO HAVE IT IN ANY COLOR, CUSTOMISE
IT ON OUR ONLINE CONFIGURATOR.



MANUFACTURER: HRX
MODEL: RACER 18
HOM_NO: DC.094.20-0
FIA STANDARD: 8856-2018



BLACK - FLUO YELLOW



BLACK - FLUO BLUE



BLACK - FLUO ORANGE



BLACK - RED



BLACK - FLUO GREEN



RACER PL NF2

TO SATISFY EVERY REQUEST, CHOOSE THE STANDARD
READY-TO-WEAR THAT SUITS YOU.

- PRICE CONSCIOUS MODEL
- VERY DURABLE
- SIMPLE AND EFFICIENT DESIGN
- HALF FLOATING ARMS
- SMALL STRETCH PANEL PART ON LOWER BACK
- BASE COLOR: BLACK. STRIPES AVAILABLE IN COLORS:
 - FLUO YELLOW
 - FLUO ORANGE
 - FLUO GREEN
 - FLUO RED
 - FLUO BLUE
- AVAILABLE IN SIZES FROM 46 TO 64



THIS IS A STANDARD PRODUCT.
TO HAVE IT IN ANY COLOR, CUSTOMISE
IT ON OUR ONLINE CONFIGURATOR.



MANUFACTURER: HRX
MODEL: RACER
HOM. NO: DC.016.19- G
FIA STANDARD: 8856-2018



GLOVES EVOLUZIONE



WHITE



BLACK



NAVY BLUE



YELLOW FLUO

EVOLUZIONE ARE THE NEW GLOVES PROJECTED BY HRX THAT HAVE A FITTING DESIGNED TO ENHANCE THE PERFORMANCE OF OUR DRIVERS ON THE RACE.

- EXTERNAL SEAMS
- INNER SEAM ON THE THUMBS
- GREAT GRIP
- GREATER SENSIBILITY
- NEW DESIGN THAT CHARACTERIZES THE MODEL
- FABRIC COLORS AVAILABLE:
WHITE - BLACK - NAVY BLUE - YELLOW FLUO



MANUFACTURER: HRX
MODEL: RACER
HOM. NO: DC.016.19- G
FIA STANDARD: 8856-2018

GLOVES RACER

THE RACER GLOVES OFFER THE BEST POSSIBLE COMFORT AND GRIP TO THE STEERING WHEEL.

- FULLY CUSTOMIZABLE
- DESIGNED BY PROFESSIONALS FOR PROFESSIONALS
- EXTERNAL STITCHING
- MAXIMUM POSSIBLE COMFORT
- GRIPPING PADS TO PROVIDE EXCELLENT GRIP
- AVAILABLE IN SIZES FROM 7 TO 12



FLUO YELLOW GLOVES



BLACK



WHITE



RED



GREY



NAVY BLUE



ROYAL BLUE





GLOVES TUTOR

THE TUTOR ARE OUR MEDIUM LEVEL GLOVES THAT OFFERS THE BEST COMFORT AND FEELING.

- INNER SEAMS
- PALMS IN SUEDE
- COMFORT AND WEIGHT-SAVING PERFORMANCE
- ELASTIC WRISTS
- AVAILABLE IN SIZES FROM 7 TO 12



MANUFACTURER: HRX
MODEL: TUTOR
HOM. NO.: DC.015.19- G
FIA STANDARD: 8856-2018





SHOES ICON

OUR **ICON** SHOES ARE THE RESULT OF DILIGENCE, EXPERIENCE AND EXTENSIVE DEVELOPMENT WITH TEAMS AND DRIVERS.

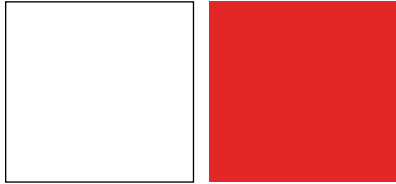
- HANDMADE IN ITALY
- GREAT QUALITY
- EXCELLENT DRIVER COMFORT AND FEELING
- COLORS: **WHITE/RED, WHITE/ROYAL BLUE, NAVY BLUE, BLACK, WHITE/PINK FLUO, WHITE**
- AVAILABLE IN SIZES FROM 37 TO 47





WHITE

RED

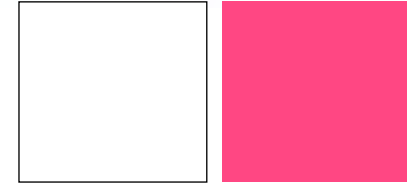


NAVY BLUE



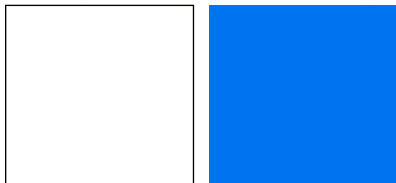
WHITE

PINK FLUO

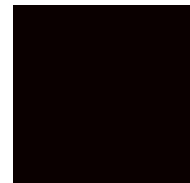


WHITE

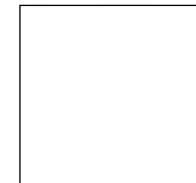
ROYAL BLUE



BLACK



WHITE



SHOES VITTORIA

VITTORIA IS OUR NEWLY-LAUNCHED PRODUCT TO REACH EVERY DRIVER'S EXPECTATIONS, WITH A DIFFERENT DESIGN FROM ICON.

- DYNAMIC DESIGN
- ULTRALIGHT AND ULTRATHIN OUTSOLE
- SHOE COLLAR AND TONGUE IN STRETCH PANEL TO PROVIDE THE BEST ELASTICITY AND COMFORT
- LIGHTWEIGHT
- SOON AVAILABLE

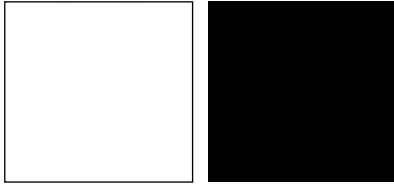
BLACK





WHITE

BLACK



WHITE

LIGHT GREY

PINK FLUO



BLACK

WHITE

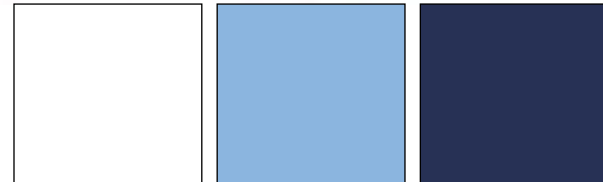
YELLOW FLUO



WHITE

LIGHT BLUE

ROYAL BLUE



UNDERWEAR ICON

ICON WHITE

OUR ICON UNDERWEAR IS STATE OF ART IN TERMS OF QUALITY, COMFORT AND DESIGN.

- LIGHTWEIGHT
- ELASTIC
- BREATHABLE
- CUSTOMIZABLE
- BALACLAVA IS AVAILABLE IN ONE SIZE
- TOP AND PANTS ARE AVAILABLE IN SIZES: XS/S - M/L - XL/XXL
- SOCKS ARE AVAILABLE IN SIZES S-M-L-XL (BLACK AND WHITE)



MANUFACTURER: HRX
MODEL: ICON TOP
HOM. NO.: DC.201.21-T
FIA STANDARD: 8856-2018

MANUFACTURER: HRX
MODEL: ICON PANTS
HOM. NO.: DC.202.21-L
FIA STANDARD: 8856-2018

MANUFACTURER: HRX
MODEL: ICON BALACLAVA
HOM. NO.: DC.216.22-B
FIA STANDARD: 8856-2018



**ICON
RED**



**ICON
BLACK**



**ICON
SILVER**



**ICON
BLUE**



ICON



**BALACLAVA
ICON RED**



**BALACLAVA
ICON BLUE**



**BALACLAVA
ICON WHITE**



**BALACLAVA
ICON BLACK**



MANUFACTURER: HRX
MODEL: ZERO SOCKS
HOM. NO.: DC.151.21-S
FIA STANDARD: 8856-2018

MANUFACTURER: HRX
MODEL: ICON BALACLAVA
HOM. NO.: DC.216.22-B
FIA STANDARD: 8856-2018

**SOCKS
ICON BLACK**



**SOCKS
ICON WHITE**





BALACLAVA WITH HOLE
UPON REQUEST, AVAILABLE IN ALL COLORS



BALACLAVA WITH RADIO LOOP
UPON REQUEST, AVAILABLE IN ALL COLORS

UNDERWEAR ZERO

OUR **ZERO** MODEL IS OUR MEDIUM-HIGH RANGE UNDERWEAR.

- COMFORTABLE
- ELASTIC
- BREATHABLE
- CUSTOMIZABLE
- BALACLAVA IS AVAILABLE IN ONE SIZE
- TOP AND PANTS ARE AVAILABLE IN SIZES XS/S - M/L - XL/XXL



MANUFACTURER: HRX
MODEL: ZERO TOP
HOM, NO.: DC.090.20-T
FIA STANDARD: 8856-2018

MANUFACTURER: HRX
MODEL: ZERO PANTS
HOM, NO.: DC.091.20-L
FIA STANDARD: 8856-2018

MANUFACTURER: HRX
MODEL: ZERO BALACLAVA
HOM, NO.: DC.089.20-B
FIA STANDARD: 8856-2018



UNDERWEAR



**BALACLAVA
ZERO BLACK**



**BALACLAVA
ZERO WHITE**



UNDERWEAR RACER 18

OUR RACER 18 UNDERWEAR IS OUR LEVEL RANGE.

- COMFORTABLE
- SOFT-TOUCH
- TOP AND PANTS ARE AVAILABLE IN SINGLE SIZES XS - S - M - L - XL - XXL
- BALACLAVA IS AVAILABLE IN SIZES S/M - L/XL



**BALACLAVA
RACER 18 BLACK**

**BALACLAVA
RACER 18 WHITE**



MANUFACTURER: HRX
MODEL: RACER18 TOP
HOM. NO.: DC.263.22-T
FIA STANDARD: 8856-2018

MANUFACTURER: HRX
MODEL: RACER18 PANTS
HOM. NO.: DC.264.22-L
FIA STANDARD: 8856-2018

MANUFACTURER: HRX
MODEL: RACER18 BALACLAVA
HOM. NO.: DC.265.22-B
FIA STANDARD: 8856-2018

UNDERWEAR INTIMO

MAN



BOXER



SLIP

WOMAN



SLIP



TOP

RESEARCH AND DEVELOPMENT COME TOGETHER TO PROVIDE OUR DRIVERS AN OUTSTANDING LEVEL OF PROTECTION WHICH GUARANTEES THE HIGHEST SAFETY IN TERMS OF FLAME RESISTANCE.

- SAFETY AND PROTECTION
- RESEARCH AND DEVELOPMENT TO ALWAYS BE AT THE FOREFRONT IN TERMS OF SAFETY
- MANDATORY FROM 2024



ALISA AND NATTANID



HRX



ACHIEVEMENT





MECHANICS

EXPERIENCE

HRX IS PROUD TO BE THE SUPPLIER FOR YOUR CREW RACEWEAR.

MANY IMPORTANT TEAMS HAVE CHOSEN US FOR OUR HIGH QUALITY PRODUCTS AND OUR MOTORSPORT DEDICATED SERVICE.

ALL OUR PRODUCTS ARE IN CONTINUOUS EVOLUTION THANKS TO THE ATTENTION AND DEDICATION OF OUR R&D DEPARTMENT, ALWAYS LOOKING FOR INNOVATIVE RAW MATERIALS. THESE SUITS ARE AVAILABLE IN DIFFERENT LEVELS AND CAN BE CUSTOMIZED TO THE USER'S OWN PERSONAL PREFERENCES.

YOU CAN ALSO FIND A RANGE OF MECHANICS ITEMS.

OUTFIT YOUR CREW WITH THE FINEST MECHANIC SUITS ADDING BOTH PROTECTION AND PROFESSIONAL APPEARANCE TO YOUR RACE TEAM.

EMOZIONE

MECHANICS

ALSO THE MECHANICS CAN WEAR OUR EMOZIONE SUIT.

- AVAILABLE ON **BESPOKE** AND **READY-TO-WEAR**.
- LIGHTEST SUBLIMATED SUIT
- ABSOLUTE FREEDOM IN TERMS OF DESIGN
- TWO DIFFERENT EXTRA KITS ARE AVAILABLE ON BESPOKE:
KIT PLUS (KNIT) – FOR A BETTER FREEDOM OF MOVEMENTS
KIT FORTE – FOR A BETTER BREATHABILITY



MANUFACTURER: HRX
MODEL: EMOZIONE
HOM_NO: DC.294.22-0
FIA STANDARD: 8856-2018

EMOZIONI



BESPOKE



READY-TO-WEAR

VELOCE

MECHANICS

THE VELOCE IS A PREMIUM-GRADE SUIT FOR OUR MECHANICS WHICH OFFERS DURABILITY AND BREATHABILITY ON A LONG-LASTING GREAT LOOK.

- EXCELLENT COMFORT
- FREEDOM OF MOVEMENTS
- FULLY FLOATING ARMS
- LOWER BACK STRETCH PANEL
- BELT WITH VELCRO CLOSURE ON REQUEST
- RADIO LOOPS ON THE BACK ON REQUEST
- KNEE PADS ON REQUEST



MANUFACTURER: HRX
MODEL: RACER 18
HOM_NO: DC.094.20- O
FIA STANDARD: 8856-2018







PIT-LANE

MECHANICS



THE RACER PIT LANE IS A MEDIUM LEVEL SUIT FOR OUR MECHANICS.

- AVAILABLE ON BESPOKE AND READY-TO-WEAR
- COMFORTABLE
- FREEDOM OF MOVEMENTS
- HALF FLOATING ARMS
- SMALL STRETCH PANEL PART ON LOWER BACK
- BELT WITH VELCRO CLOSURE
- KNEE PADS ON REQUEST



MANUFACTURER: HRX
MODEL: RACER
HOM. NO.: DC.016.19- G
FIA STANDARD: 8856-2018

COTTON MECHANICS SUIT

OUR NON HOMOLOGATED SUIT WITH A SINGLE LAYER

- RESISTANT AND BREATHABLE
- MADE OF COTTON AND POLYESTER
- TWO BIG POCKETS ON THE LEGS WITH VELCRO CLOSURE
- FULLY FLOATING ARMS
- LEG BOTTOMS WITH VELCRO
- CUSTOMIZABLE WITH EMBROIDERIES OR PRINTS

AVAILABLE IN THE COLOURS:



BLACK

NAVY BLUE

GREY

COLOURS ON REQUEST



RED

ROYAL BLUE





UNITED AUTOSPORTS
unitedautosports.com

CISION

Global Medical Response

LIVEX

UNITED AUTOSPORTS

GOODYEAR

Applied PLUS INSURANCE

Applied PLUS INSURANCE

HRX

GLOVES

MECHANICS

FOR OUR MECHANICS, WE PROPOSE TWO TYPES OF GLOVES: TUTOR AND TUTOR PRO TECH.

TUTOR:

- INNER SEAMS
- PALMS IN SUEDE
- COMFORT AND WEIGHT-SAVING PERFORMANCE
- ELASTIC WRISTS
- AVAILABLE IN SIZES FROM 7 TO 12

TUTOR PRO TECH:

- SAME AS TUTOR WITH PROTECTION ON THE BACKS OF THE HANDS AND ON THE THUMBS



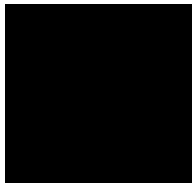
MANUFACTURER: HRX
MODEL: TUTOR
HOM_NO: DC.015.19- G
FIA STANDARD: 8856-2018



TUTOR



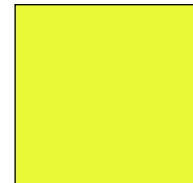
BLACK



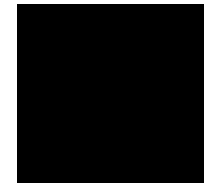
TUTOR PRO TECH



YELLOW FLUO



BLACK



PIT-LANE

MECHANICS

OUR PIT-LANE SHOES ARE THE RESULT OF DILIGENCE, EXPERIENCE AND EXTENSIVE DEVELOPMENT WITH TEAMS.

- HANDMADE IN ITALY
- TOP QUALITY
- EXCELLENT COMFORT AND FEEL
- AVAILABLE IN SIZES FROM 37 TO 47



MANUFACTURER: HRX
MODEL: PI-LANE
HOM. NO.: DC.144.21-Z
FIA STANDARD: 8856-2018



P I T - L A N E



RACER 18

MECHANICS

OUR RACER 18 UNDERWEAR IS OUR NEW-ENTRY LEVEL RANGE, ALSO AVAILABLE FOR MECHANICS.

- COMFORTABLE
- SOFT-TOUCH
- LENGTH ADAPTED TO THE MECHANICS (BOTH TOPS AND BALACLAVAS)
- TOPS AND PANTS ARE AVAILABLE IN SINGLE SIZES XS - S - M - L - XL - XXL
- BALACLAVA IS AVAILABLE IN SIZES S/M - L/XL



**BALACLAVA
BLACK**



MANUFACTURER: HRX
MODEL: RACER18 TOP
HOM_NO: DC.263.22-T
FIA STANDARD: 8856-2018

MANUFACTURER: HRX
MODEL: RACER18 PANTS
HOM_NO: DC.264.22-L
FIA STANDARD: 8856-2018

MANUFACTURER: HRX
MODEL: RACER18 BALACLAVA
HOM_NO: DC.265.22-B
FIA STANDARD: 8856-2018



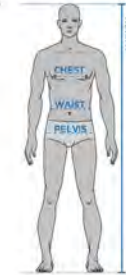






ADULT - MAN

	S		M		L		XL		2XL	
SIZE	46	48	50	52	54	56	58	60	62	64
CHEST	92	96	100	104	108	112	116	120	124	128
WAIST	82	86	90	94	98	102	106	110	114	118
PELVIS	92	96	100	104	108	112	116	120	124	128
WEIGHT	60	66	72	78	84	90	96	102	108	114
HEIGHT	165-167	168-170	171-173	174-177	178-182	183-185	186-188	189-191	192-194	195-197



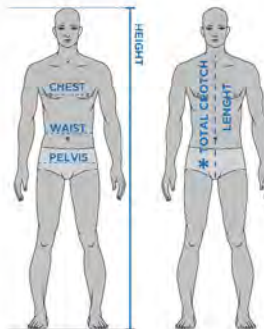
ADULT - WOMAN

	XS		S		M		L		XL	
SIZE	38	40	42	44	46	48	50	52	54	56
BREAST	78-82	82-86	86-90	90-94	94-98	98-102	102-106	106-110	110-114	114-118
WAIST	58-62	62-66	66-70	70-74	74-78	78-82	82-86	86-90	90-94	94-98
PELVIS	82-86	86-90	90-94	94-98	98-102	102-106	106-110	110-114	114-118	118-122
WEIGHT	40-45	45-50	50-55	55-60	60-65	65-70	70-75	75-80	80-85	85-90
HEIGHT	154-158	157-161	160-164	163-167	166-170	168-172	170-174	173-177	176-180	179-183



CHILD

	120	130	140	150
AGE	6-7	8-9	10-11	12-13
CHEST	60-65	66-71	72-77	78-83
WAIST	55-60	61-66	67-72	73-78
PELVIS	69-71	72-75	76-79	80-83
THIGH	37-39	40-42	43-44	45-47
*CROTCH	104-106	107-110	111-113	114-117
WEIGHT	20-23	24-28	29-36	37-44
HEIGHT	116-125	126-135	136-145	146-155



YOUNG

	38	40	42	44
CHEST	76	80	84	88
WAIST	66	70	74	78
PELVIS	76	80	84	88
WEIGHT	44	48	52	56
HEIGHT	152-154	155-157	158-161	162-164

Chest, waist, pelvis, thigh and crotch are circumferences. All measures are expressed in cm

UNDERWEAR

ZERO - ICON

	XS/S	M/L	XL/XXL
SIZE	46-48	50-56	58-64
CHEST	92-96	100-112	116-128
WAIST	82-86	90-102	106-118
PELVIS	92-96	100-112	116-128
WEIGHT	60-66	72-90	96-114
HEIGHT	165-170	170-185	186-197



RACER 18

	S	M	L	XL	2XL
SIZE	46-48	50-52	54-56	58-60	62-64
CHEST	92-96	100-104	108-112	116-120	124-128
WAIST	82-86	90-94	98-102	106-110	114-118
PELVIS	92-96	100-104	108-112	116-120	124-128
WEIGHT	60-66	72-78	84-90	96-102	108-114
HEIGHT	165-170	170-177	178-185	186-191	192-197



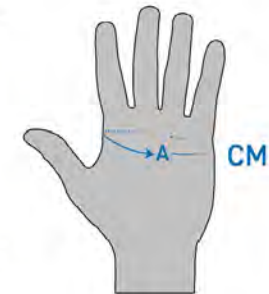
GLOVES

RACER

	7	8	9	10	11	12
SIZE	XXS	XS	S	M	L	XL
A circumference	15,5-17,5	17,5-19,5	19,5-21,5	21,5-23,5	23,5-25,5	25,5-29

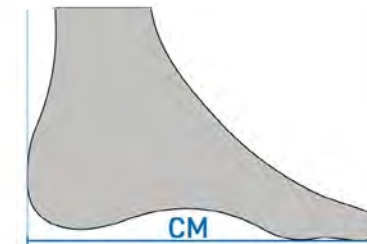
EVOLUZIONE

	7	8	9	10	11	12
SIZE	XXS	XS	S	M	L	XL
A circumference	17,6-18,7	18,8-19,9	20,0-21,1	21,2-22,3	22,4-23,5	23,6-24,7

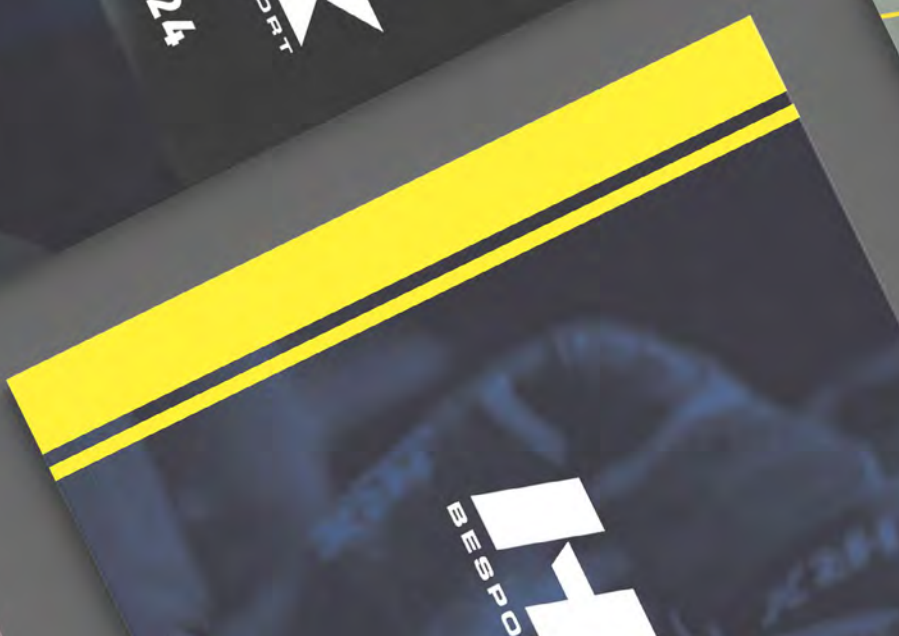


SHOES

SHOES	EU	37	38	39	40	41	42	43	44	45	46	47
	UK	4½	5	5½	6½	7	8	9	9½	10½	11	12
	US	5½	6	6½	7½	8	9	10	10½	11½	12	13
	CM	24	25	25,5	26	27	27,5	28	28,5	29	30	31
SOCKS		S		M			L		XL			



Chest, waist, pelvis, thigh and crotch are circumferences. All measures are expressed in cm



Our world is so much more.

Motorsport / Karting / Sublimated teamwear
HRX_promo / HRX_ski

You can find them on our website: hrxtech.eu



**YOUR SUIT.
YOUR DESIGN.
YOUR RACE.**

HRX
BESPOKEMOTORSPORT


MADE IN ITALY

visit us
www.hrxtech.eu



Tel. 011 6814951 - info@hrxtech.eu | Via E. Macario 7 - Trofarello (TO) - ITALY